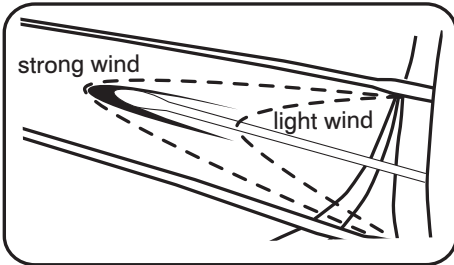




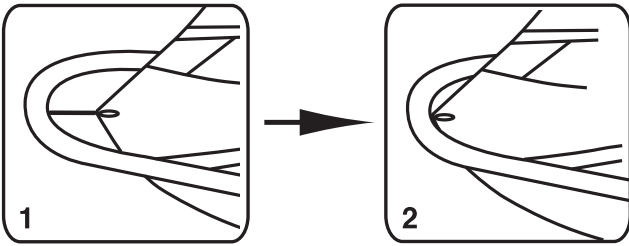
Ezzy Wave SE Tuning

1 Downhaul for light to strong wind:



Pull the downhaul and watch the sailcloth slacken by the printed swoosh between battens #2 and #3. For light wind, downhaul until the slackness just reaches the back of the swoosh. For strong wind, downhaul until the slackness extends to the front of the swoosh.

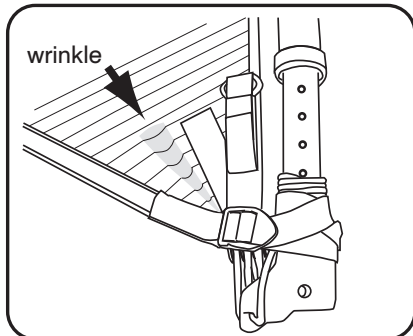
2 Outhaul for light to strong wind:



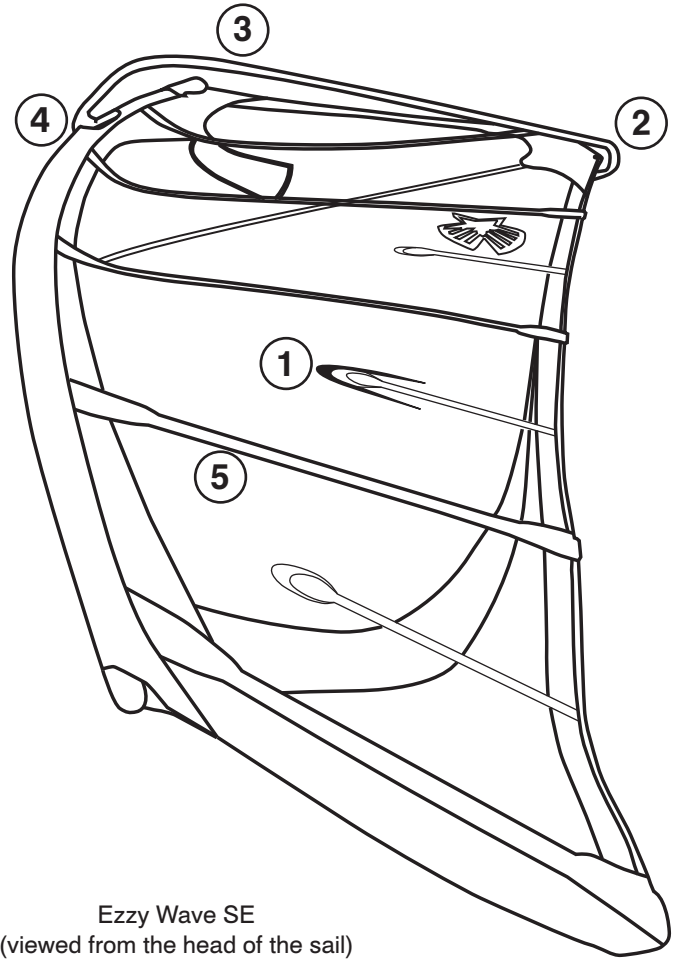
1) With your sail correctly downhauled, adjust your boom length. Hold the sail's clew-cord straight out and adjust the boom-end to meet it (use the short cord for light wind, medium cord for medium wind and long cord for strong wind).

2) Now that your boom is set to the correct length, outhaul the sail to the end of the boom.

3 Tack Strap, tighten it and wrap it:

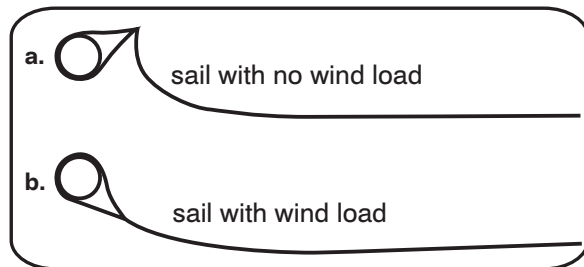


Wrap your downhaul line around the mast base. Tension the tack strap until you get a small wrinkle running out from the corner, then wrap the tack strap over the downhaul line and loop it under itself.



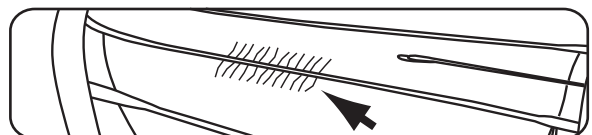
Ezzy Wave SE
(viewed from the head of the sail)

4 Batten cross-section view:



When unloaded, the cross-section of the batten above the boom will look like diagram (a). Loaded with wind, it will look like diagram (b).

5 Batten Tension:



Use the tensioner key, that is stored at the tack of the sail to tension the battens until any vertical wrinkles that extend on either side of the batten pocket are eliminated.

Frequently Asked Questions:

Why do I need so much positive outhaul for high wind sailing?

The Wave SE has been designed with a large amount of shape built into the seams. If you don't outhaul enough, the sail will be too deep. **IN STRONG WIND, IT IS VERY IMPORTANT THAT YOU APPLY 8 TO 10 CM OF OUTHAUL.**

What can I do to make my sail last longer?

- 1) When you are not sailing, store your sail in the shade away from direct sunlight.
- 2) Try not to crease your sail while rigging and de-rigging
- 3) If you store your sail vertically, make sure it is sleeve-end down. This prevents the clew from being damaged.

Do I need to rinse my sail with fresh water after sailing?

No.

Do I need to dry my sail before rolling it up?

No.

What do I do with the pad when rolling the sail?

After rolling the sail, fold the pad up, so it rests along the sail, then wrap the tack strap around the pad and the sail. Secure the velcro.

Which end of the sail goes into the bag first?

To avoid wrinkling the clew, always insert your sail into the bag with the sleeve-end first.

My vinyl window has turned hazy blue and is now hard to see through. What should I do?

This happens when you roll your sail up wet with fresh water. Once it dries, it will go back to being clear.

What's the best way to clean my window?

The vinyl window can be cleaned with fresh water and a dry towel.

Problem Solving:

The two battens above the boom seem to have a lot of tension on them. Is this normal?

Yes. We want a lot of batten tension on the two battens above the boom. We rigged and set your batten tension in the factory. You may need to adjust your batten tension again after the first few times sailing your new sail.

I get jerked forward while sailing.

This can be caused by too little downhaul or a mast that is too stiff in the top. It may also help to move your mast further back on your board.

My sail feels too powerful.

The sail is too full. Try more outhaul and possibly more downhaul.

My sail doesn't feel stable when sailing.

Sail is too full. Try more outhaul and possibly more downhaul.

I need more power.

Sail is too flat. Try less outhaul and possibly less downhaul.

My sail pulls too much on my back arm.

Try more outhaul and possibly less downhaul. Try moving your harness lines further back.

My sail pulls too much on my front arm.

Try less outhaul and possibly more downhaul. Try moving your harness lines further forward.

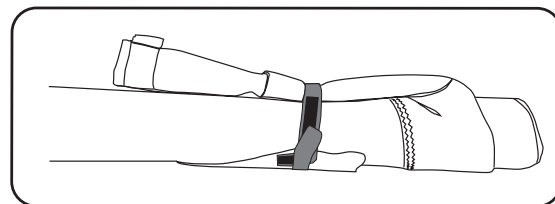
Ezzy Mast:

Does the Ezzy Wave SE only work on Ezzy Skinny Masts?

No. The Wave SE was designed to work on both skinny and regular masts.

What is the advantage of using an Ezzy Skinny Mast?

They are stronger, lighter and easier to maneuver.



After rolling your sail, wrap the tack strap around the pad and sail.



To avoid damaging your sail, insert the sleeve-end first into the bag.

Ezzy Mast Selector Chart

SAIL	340 Top	340 Base	370 Top	370 Base	400 Top	400 Base	430 Top	430 Base	460 Top	460 Base	490 Top
2.9	x	x									
3.3	x	x									
3.5	x	x									
3.7		x	x								
4.0			x	x							
4.2			x	x							
4.5				x	x						
4.7					x	x					
5.0					x	x					
5.2						x	x				
5.5							x	x			
5.8							x	x			
6.0							x	x			
6.3							x	x			
6.9									x	x	

x = best combination

■ = good combination

For more information, please go to our web site at www.ezzy.com

