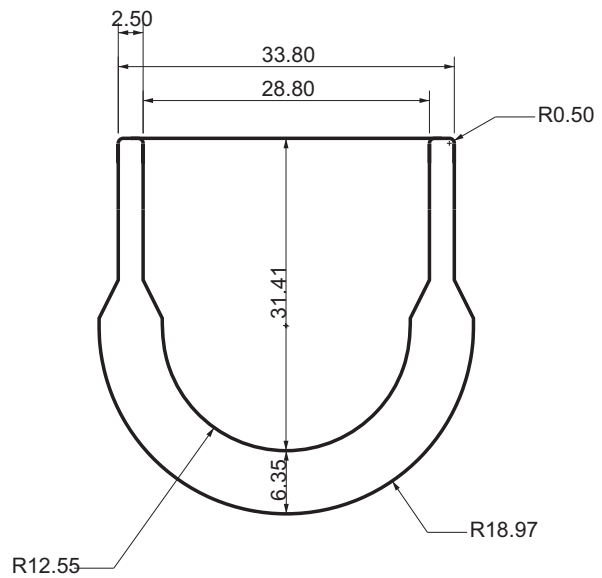
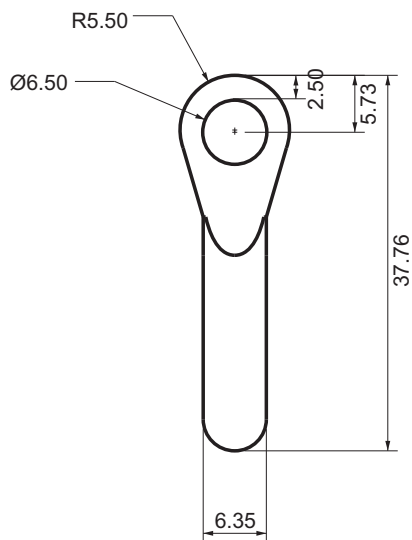
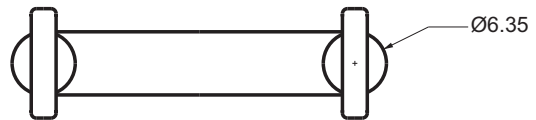
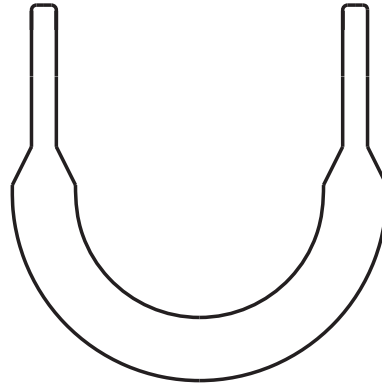
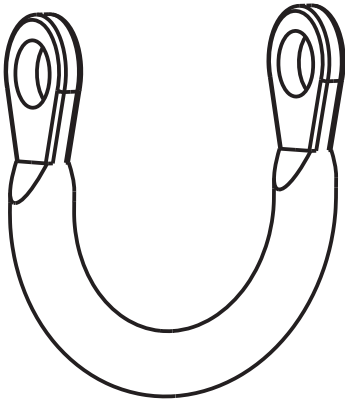
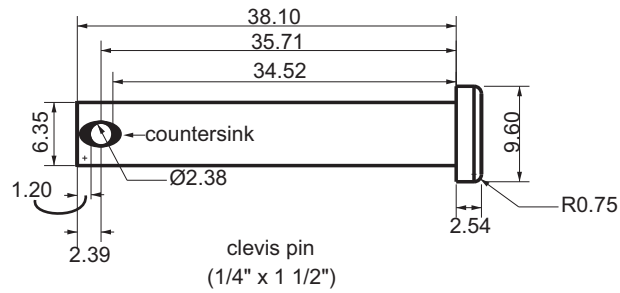


D-Ring:

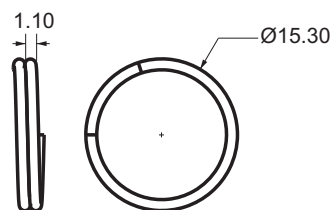


Clevis Pin:



Material Type:	Stainless Steel
Finish:	Plain
Stainless Steel Type:	18-8 Stainless Steel
Pin Type:	Clevis Pins
Clevis Pin Type:	Standard
Diameter:	6.35 mm
Actual Head Diameter (Min.-Max.):	9.40 mm - 9.65 mm
Actual Diameter (Min.-Max.):	6.17 mm - 6.30 mm
Usable Length:	34.52 mm
Overall Length:	38.1 mm
Actual Head Height (Min.-Max):	2.03 mm - 2.54 mm
Single Shear Strength:	1,600 lbs.
Rockwell Hardness:	B83-B95

Split Ring:



split ring

18-8 Stainless Steel